



Getting to Layritz Park

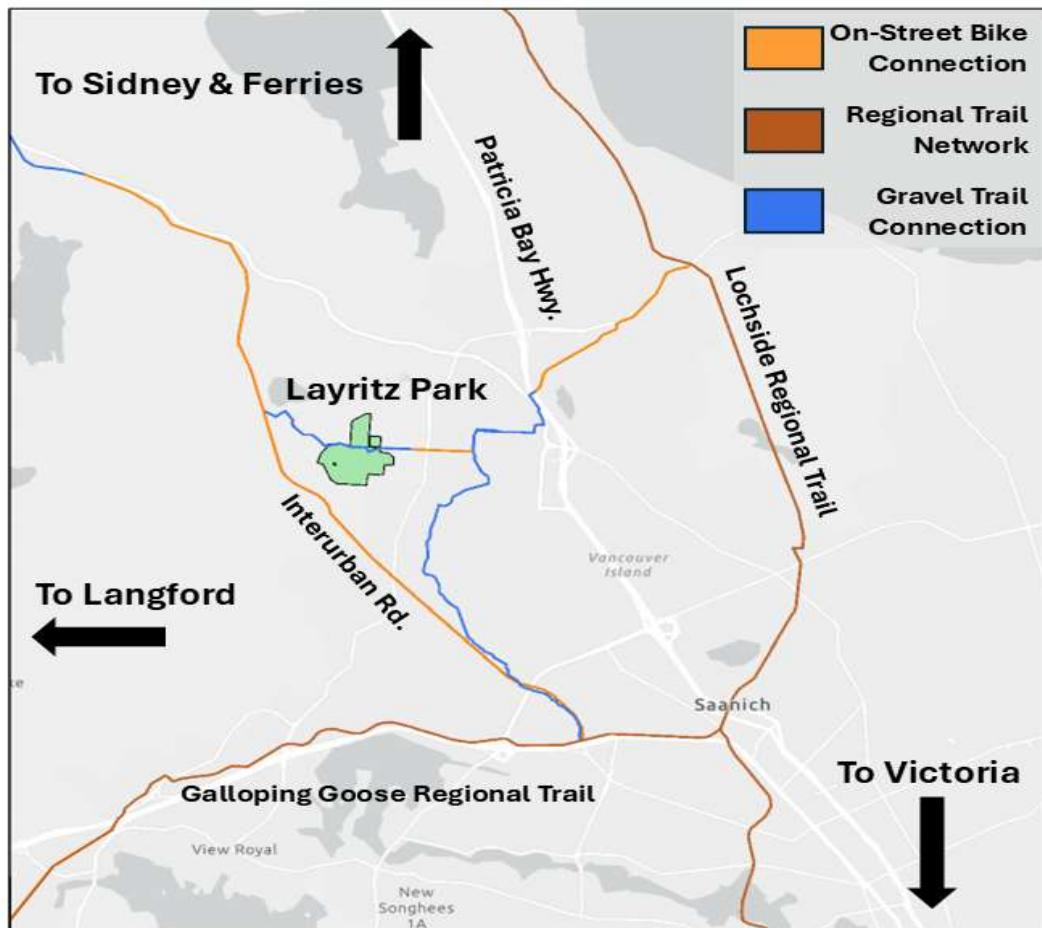
2025 Canadian Little League Championships – July 29 to August 7, 2025

Layritz Little League is excited to welcome teams and fans from across Canada to Layritz Park for 10 days of amazing baseball and community fun! Here's everything you need to know about getting to the park and parking options for the tournament.

Walk or Bike If You Can!

Layritz Park is in the heart of Saanich and is easily accessible by foot or bike from several nearby neighborhoods.

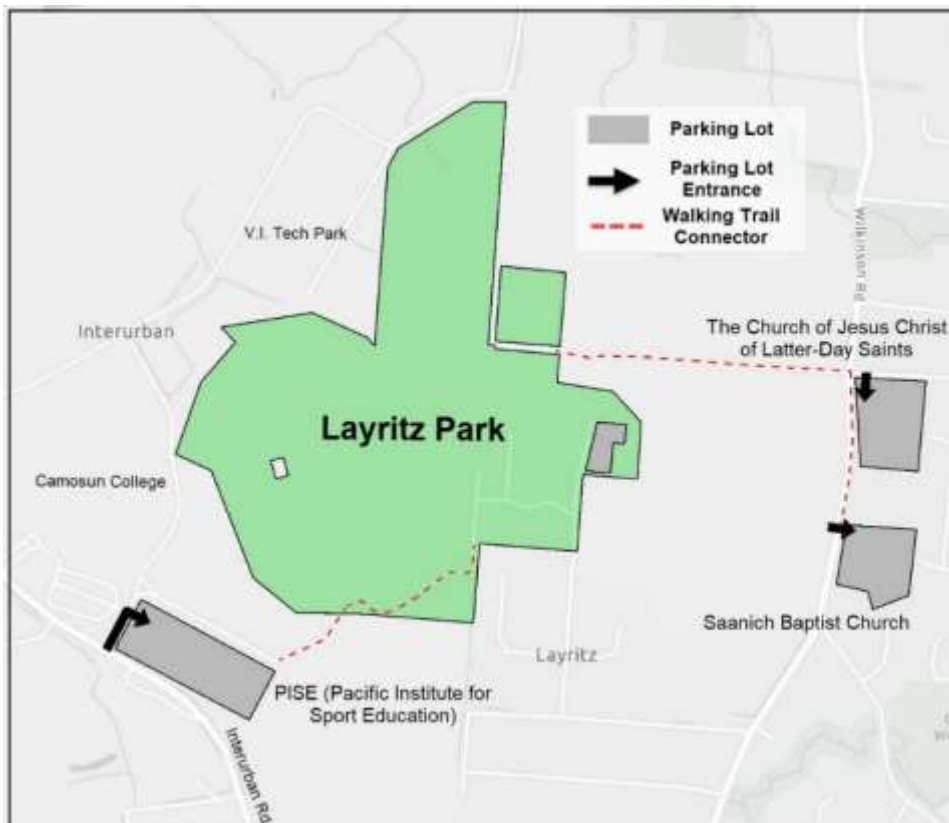
- Bike racks are available in the park
- Walking or cycling helps reduce congestion and is a great way to enjoy the summer weather. Let's keep the tournament green and stress-free!
- For more detailed bike maps, visit: [Find a Bike Map](#)



Driving & Parking

If you need to drive, there are several parking options nearby. Please respect all posted signage and be mindful of our community partners generously sharing their space. Please only park in designated parking stalls (no parking along the entrance laneway or on the grass).

- | | |
|------------------------------------------------------------------------------------|--------------------------------------------------------------------------------------------------------------------------------------------------------|
| <p>1 Layritz Park Main Lot - 4328 Layritz Ave.</p> | <ul style="list-style-type: none"> • Closest to the fields • Spaces are limited and will fill quickly |
| <p>2 Saanich Baptist Church – 4347 Wilkinson Rd.</p> | <ul style="list-style-type: none"> • ~12-minute walk to the park • No parking on Sundays until 4:00PM due to services |
| <p>3 The Church of Jesus Christ of Latter-day Saints – 701 Mann Ave.</p> | <ul style="list-style-type: none"> • ~8-minute walk to the park • No parking on Sundays until 4:00PM due to services |
| <p>4 PISE (Pacific Institute for Sport Education) – 4371 Interurban Rd.</p> | <ul style="list-style-type: none"> • ~8-minute walk to the park • Pay parking in effect during the weekdays - free on weekends |



* Please note: The Vancouver Island (VI) Technology parking lot may have available spots during evenings and weekends, but this is not a recommended parking option. If you park here, pay attention when pay parking is in effect.

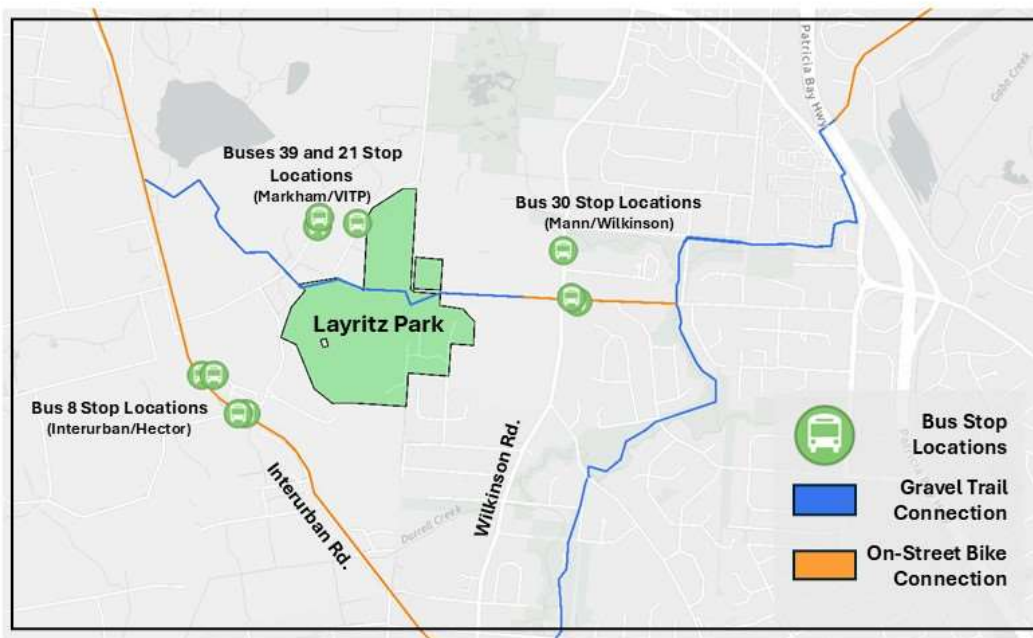


Accessibility

There are four accessible parking spots available in the main Layritz lot. Please ensure your permit is clearly displayed. Spectators with accessibility needs can be dropped off/picked up in the roundabout at the main lot.

Public Transit

Several BC Transit routes serve the Layritz Park area, including routes along Wilkinson Rd and Interurban Rd. Visit bctransit.com/victoria for current schedules and trip planning



Please Respect Residential Parking Rules

We kindly ask all visitors to observe posted signage and avoid parking in restricted or residential-only areas surrounding Layritz Park.

- Blocking driveways, fire lanes, or ignoring posted “No Parking” signs may result in ticketing or towing
- Our neighbors have generously supported this event—let’s return that respect with courteous parking choices

Residents can contact Saanich parking bylaw at: parking@saanich.ca or 250-475-5431 with any issues.